

MicroStep®

spol. s r.o.



MasterCut

- MasterCut is a versatile and reliable gantry machine that is characterized by its optimal price/performance ratio
- Very good cutting quality as a result of dual side synchronized drive system in longitudinal axis
- Several machine variations tailored to different customer's requirements
- Wide range of optional accessories offers combination of various technologies
- Precision cutting with high-definition plasma sources as well as with standard air plasma sources
- Simultaneous oxyfuel cutting with 6 torches maximizes customer's productivity
- Efficient and user-friendly PC-based CNC control system iMSNC®
- Integrated remote diagnostics utilities
- Meeting of comprehensive safety and environmental standards
- Advanced height control for plasma cutting based on proprietary adaptive algorithms backed by ball screw actuated Z axis





MasterCut



Easy to operate

MicroStep iMSNC[®] is one of the most advanced control systems in CNC cutting machinery. The system provides easy, user friendly and thus reliable operation of cutting machines via modern user interfaces: a standalone operator console with TFT touch screen and one or two control panels with LCD displays on the sides of the gantry. To achieve maximum utilization and flexibility of machine operation, a standalone operator console offers the possibility to prepare and edit cutting plans simultaneously with the cutting process. Since the machine, control system iMSNC[®] and CAM software AsperWin[®] are from one producer – MicroStep – it allows to implement also non-standard requests and develop custom solutions.

- Integrated database of tool parameters
- Multi-tool operation
- Automatic assignment of tool parameters to processed material
- Full network connectivity
- Remote diagnostics and assistance
- Parametrical dynamic piercing
- Zone management with batch cutting
- Monitoring of consumable life
- Advanced servicing software tools

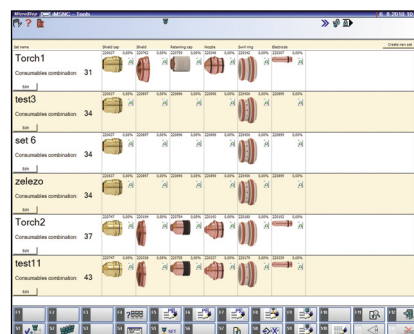
Intranet applications

Intranet applications enable comfortable integration of the machine into production workflow and provide access to the machine via SQL databases and web services. MicroStep iMSNC[®] includes a novel web-based interface for accessing each machine from the company intranet via a web browser. Each machine has its own home page which serves as a gateway for intranet applications.

MicroStep Production Management (MPM) – adds computer-aided process planning (CAPP) capabilities to MicroStep solutions. An integrated system of order processing, nesting, stock control, machine operation planning and evaluation helps to reduce work-in-progress, to save material, and to eliminate operator errors.

EkolInfo – evaluation of machine operation costs for a particular cutting program.

Machine Info – monitoring of machine and operator activities that enables to assign performance information to work shifts and to create specific technological records.



Technical parameters*

Working length	3000 – 30 000 mm
Working width	1500 – 4 000 mm
Max. number of tool stations	6
Max. thickness of material cut by oxyfuel	200 mm (optionally 250 mm)
Positioning speed	up to 25 m/min
Control system	MicroStep iMSNC [®]
Type of the guides in X direction	rails
Type of the guides in Y direction	linear guidelines

* depends on the machine configuration.

MicroStep[®]
spol. s r.o.

MicroStep spol. s r.o. tel.: +421 2 43 41 11 69
Tomášikova 28 fax: +421 2 43 33 99 87
821 01 Bratislava www.microstep.eu
Slovakia e-mail: marketing@microstep.sk



www.microstep.eu

OPTIONAL ACCESSORIES



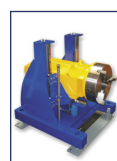
Plasma



Tilting head



Oxyfuel



Pipe cutting device



Drilling unit



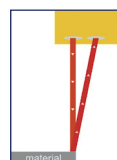
Inkjet marker



MicroPunch



CCD camera



Automatic plate alignment

The descriptions, technical data and illustrations contained in this document are provided for guidance purpose only and are non-binding. The manufacturer reserves the right to make changes without notification.